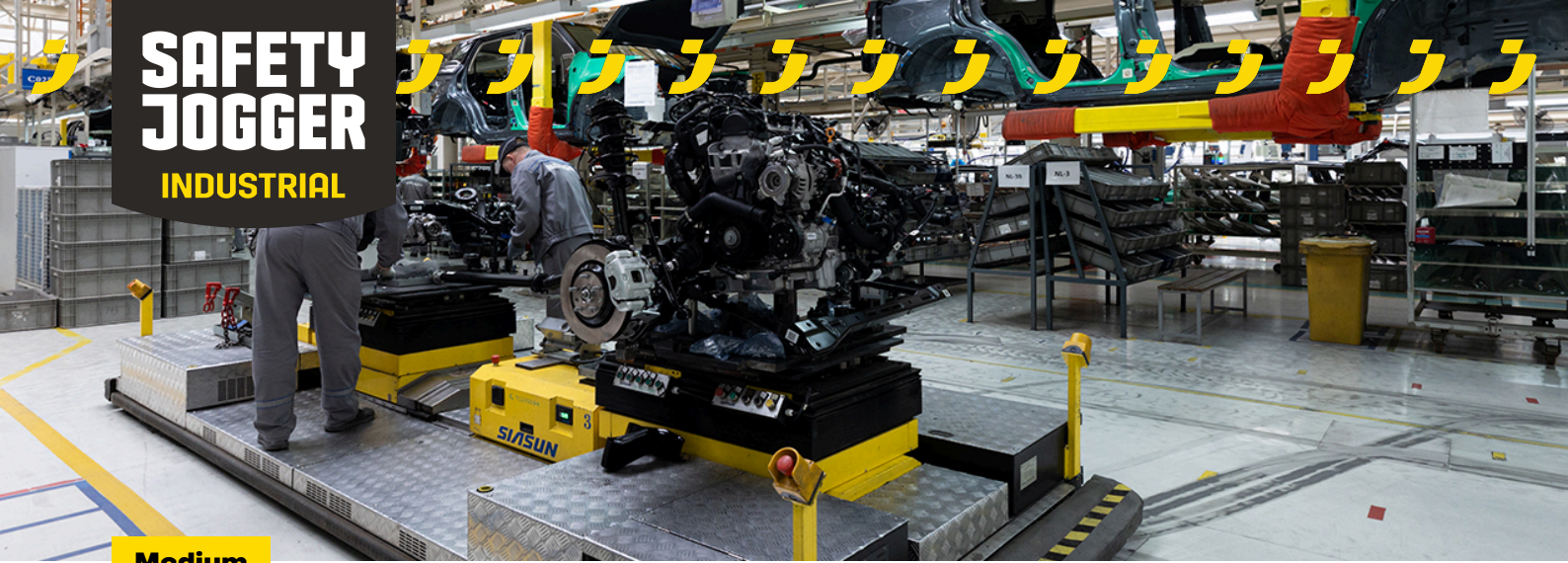


# SAFETY JOGGER

## INDUSTRIAL



Medium

## FLOW S3 LOW TLS

FLAWS3LTLS

**Sporty metal-free low-cut S3 ESD safety shoe with TLS closing**

Upper	Synthetic Nubuck
Lining	3D-Mesh
Footbed	SJ foam footbed
Midsole	Anti-puncture Textile
Outsole	PU/PU
Toecap	Composite
Category	S3 / ESD, SRC
Size range	EU 35-48 / UK 3.0-13.0 / US 3.0-13.5 JPN 21.5-31.5 / KOR 230-315
Sample weight	0.602 kg
Norms	ASTM F2413:2018 EN ISO 20345:2011



BLK



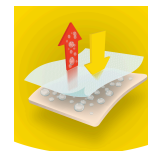
### Composite toecap

Metalfree and lightweight, no thermal or electrical conductivity



### Removable insole

Renew your insole at a regular base or use your own orthopedic insoles for a higher comfort.



### Airblaze technology

Moisture and temperature management system to provide optimum wearer comfort by keeping your feet dry and comfortable.



### Electrostatic Discharge (ESD)

ESD provides the controlled discharge of electrostatic energy that can damage electronic components and avoids risks of ignition resulting from electrostatic charges. Volume resistance between 100 KiloOhm and 100 MegaOhm.



### TLS (Twist Lock System)

Safety Jogger's innovative TLS closure allows you to quickly tighten and loosen your safety footwear with one hand and under any conditions, even when you are wearing safety gloves. TLS ensures a fast, safe and easy precision fit that offers enhanced comfort and enables you to perform at your best.

**Industries:**

Assembly, Automotive, Food & beverages, Logistics, Industry

**Environments:**

Dry environment, Extreme slippery surfaces, Wet environment

**Maintenance instructions:**

To extend the life of your shoes, we recommend to clean them regularly and to protect them with adequate products. Do not dry your shoes on a radiator, nor nearby a heat source.

	Description	Measure unit	Result	EN ISO 20345
<b>Upper</b>	<b>Synthetic Nubuck</b>			
	Upper: permeability to water vapor	mg/cm <sup>2</sup> /h	2.2	≥ 0.8
	Upper: water vapor coefficient	mg/cm <sup>2</sup>	28	≥ 15
<b>Lining</b>	<b>3D-Mesh</b>			
	Lining: permeability to water vapor	mg/cm <sup>2</sup> /h	61.1	≥ 2
	Lining: water vapor coefficient	mg/cm <sup>2</sup>	490	≥ 20
<b>Footbed</b>	<b>SJ foam footbed</b>			
	Footbed: abrasion resistance (dry/wet) (cycles)	cycles	25600/12800	25600/12800
<b>Outsole</b>	<b>PU/PU</b>			
	Outsole abrasion resistance (volume loss)	mm <sup>3</sup>	400	≤ 150
	Outsole slip resistance SRA: heel	friction	0.36	≥ 0.28
	Outsole slip resistance SRA: flat	friction	0.37	≥ 0.32
	Outsole slip resistance SRB: heel	friction	0.14	≥ 0.13
	Outsole slip resistance SRB: flat	friction	0.19	≥ 0.18
	Antistatic value	MegaOhm	N/A	0.1 - 1000
	ESD value	MegaOhm	39	0.1 - 100
	Heel energy absorption	J	27	≥ 20
<b>Toecap</b>	<b>Composite</b>			
	Impact resistance toecap (clearance after impact 100J)	mm	N/A	N/A
	Compression resistance toecap (clearance after compression 10kN)	mm	N/A	N/A
	Impact resistance toecap (clearance after impact 200J)	mm	15.0	≥ 14
	Compression resistance toecap (clearance after compression 15kN)	mm	19.0	≥ 14

Sample size: 42

Our shoes are constantly evolving, the technical data above may change. All product names and brand Safety Jogger, are registered and may not be used or reproduced in any format, without written consent from us.